

**Jekshine**<sup>®</sup>

**Jekson Machinery Pvt.Ltd.**

An ISO 9001 : 2008 CERTIFIED COMPANY

## Director's Message



It's my pleasure to welcome you to Jekson Machinery Plate Form. The one stop manufacturer's and supply house of specialized products and accessories in CNC, NC & Conventional Hydraulic Press brakes, Shear, Presses, Plasma, Oxy Fuel, Water jet & Robotic Automations and other related engineering products.

Since our inception in 1995, we are major contributors in the recent and ongoing developments in sheet metal forming, cutting, joining and construction industries nation wide.

By combining experience, knowledge of global industrial requirements, practices and needs from our customer base, We prove our product in the best & committed Manner to the customers in the best possible way.

With the ongoing and phenomenal infrastructure development in our country & with more the 3000 machine installation. Jekson Machinery is been consistently contributing to the region's economic growth and has complimented its best skills and expertise in state of the art engineering products and services.

We will continue to lead in offering quality products and services of the highest standard. Our Company's vision, Strategy and policies will always be geared toward continuous innovation and better performance.

The future is certain to bring on many changes in business practices, markets trends and product demands. Jekson Group always Keep the customer's demands and requirements as our top most priority; we will be able to incorporate any changes seamlessly and in the shortest possible time.

We have successfully positioned ourselves at the centre of Industry's best practices, as more transactions are successfully executed, the more will be able to drive our customer's business growth and scale our business.

Most importantly, with this success we develop future opportunities to transform more lives. "Based on the expertise we acquired over 20 years, we Endeavor to advance our standards of excellence and to surpass the expectations of both customers and ourselves."

Mr. Jagdish J. Panchal

Chairman & Managing Director

## Company Profile



In the year 1995 From a humble family , a modest beginning & with Great faith & the blessing of the almighty a small factory in an industrial gala the company started building their first model machine with 4 work men, & have now grown into a fully state of the art CNC equipments manufactures with nearly 100 work force & three sister concerns company.

Most of our customer from a single machine has now grown to a large organization with multiple of our machinery, more than 3000 machine are installed globally, Hundreds of satisfied customers & Thousands of happy machine operators using the machine 24 X 7 withstanding all arduous working environments.

We are head quartered at Ahmedabad with globally sales & service network.

The guiding Philosophy of the company is to work hard, have innovative concept exceed customer's expectation; manufacture outstanding product readily available & at an affordable price.

We strongly believe that our customer satisfaction & thus their loyalty are our success.

We encourage you to experience the quality & the wide range of products with ever ready to serve attitude of our dedicated team of employees.

We welcome you to visit our factory for all your Sheet metal Cutting, Bending, Forming & Joining Requirements.

## **Mile Stone :**

- 1995 : Company formation with four workman and two young entrepreneurs.
- 1995 – 2000 : Company got it's own in house manufacturing facility.
- 2001 – 2003 : Company has reach the boom of growth and implemented good workmanship and well trained & qualified engineers team to the company.
- 2003 – 2005 : Company has been successfully installed more than 1500 machines in the global market.
- 2006 – 2007 : Company has expanded manufacturing facility and the work force to enhance production.
- Company has launched NC – Press Brake in the market.
- 2007 – 2008 : Company has got the good experience of the more than 13 years target ordinance and the Indian industries.
- 2008 – 2009 : Company has implemented management systems and DMS (Data Management System) in the company with the help of highly reputed and efficient team.
- Company has launched complete tower line machinery for the Indian tower manufacturing Industries.
- 2009 – 2011 : Company got good efficient growth due to quality, innovations, precision, Reliability and thousands number of successful installations.
- Company has launched CNC Press break & Shearing Machine, First Bellow Forming Machine up to 1.5 meters.
- 2011 – 2013 : Modern designing software like 2D & 3D cad has been fully utilized to increase product efficiency. Company has launched CNC Oxy/Plasma Cutting M/C during this period.
- 2014 – 2015 : Company has completed 20 years by serving best products with many Installations.
- 2015 – 2016 : Upcoming new product range and new customer are eager to have best product from us and we are moving ahead with a marketable growth range in the Indian Industry...

## **Vision :**

Our Vision is to be Partner in the GROWTH of Engineering Industry through KNOWLEDGE & UNDERSTANDING EXCELLENCE.

## **Mission :**

- Mission creating & Pursing Future Value for Client through engineering brilliance & innovative solutions in sheet metal forming.
- Our Mission is to give customize solution in sheet metal forming machinery which provide uninterrupted work out to generate upmost production.
- Our Mission to provide innovative solution for SPM (Special Purpose Machine)

## **Value :**

- Continuous Learning
- Trust
- Quality
- Reliable
- Innovation

## INDEX

<b>NO.</b>	<b>DESCRIPTION</b>	<b>PAGE NO.</b>
1.	MESSAGE FROM DIRECTOR DESK	01
2.	COMPANY PROFILE	02
3.	MILE STONE - VISION - MISSION	03
4.	CNC PRESS BRAKE	05
5.	CNC SHEAR	08
6.	CNC PLATE PUNCHING MACHINE	10
7.	CNC PLASMA CUTTING MACHINE	12
8.	CNC WATERJET CUTTING MACHINE	15
9.	HYDRAULIC PRESS BRAKE	17
10.	HYDRAULIC SHEAR	20
11.	HYDRAULIC PRESS "C" & "H" TYPE	22
12.	ANGLE SHEARING MACHINE	24
13.	ANGLE PUNCHING MACHINE	25
14.	ANGLE STAMPING MACHINE	26
15.	ANGLE NOTCHING MACHINE	27
16.	HORIZONTAL BENDING PRESS	28
17.	CNC ROUTER	29
18.	HEEL CUTTING Machine	30
19.	ANGLE PROCESSING MACHINERY	30
20.	SPECIAL PURPOSE MACHINE	31
21.	COMPANY NETWORK	33
22.	KEY CUSTOMER	33
23.	NOTE	34

## CNC Press Brake



- 80 to 500 Ton Hydraulic CNC Press Break
- 1500 mm to 6000mm Length

### **STANDARD FEATURES :**

- Down stroking , Electric / Hydraulic Closed loop servo controlled valve.
- Two axis independent ram control (Y1 & Y2), Ram is Fully Guided throughout the entire stroke, guides do not require lubrication and linear encoders for ram feedback and positioning.
- High Speed, CNC back gauge (x), two finger stops with alenguide are standard (Optional R axis).
- Esa/cybilac/Delem compact numerical control.
- Two material support arms with alenguide.
- Quick clamp toolings.

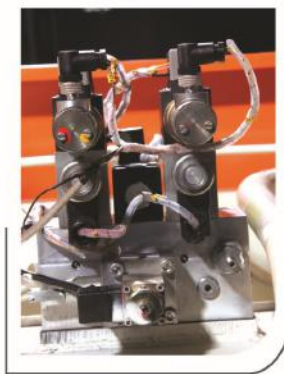
### **ADDITIONAL FEATURES :**

- Harden & Ground Tooling
- Quick Clamp Attachment
- Tooling Segment
- Front Arm Rest
- Hand wheel
- Finger Guard and light curtain for safety purpose
- Human interference Guard at Rear Side of machine

Controller



Hydraulic  
Control Valve



Electric Panel



Backgauge



Tooling



## **MACHINE FRAME :**

- The frame is an assembly of a heavy steel plate consisting of 2 side frames, a upper and lower cam plate, reinforced sheet-metal plate for the oil-tank and the hydraulic unit. After welding of the frame it is de-stressed. Some of the main features of this frame are:
- The machined cylinder mount is a integral part of the side-frame.
- The extra heavy side and rear plates provide superior frame stability.
- Ram electrical / hydraulic closed-loop servo system



# Jekson Machinery Pvt.Ltd.

An ISO 9001-2008 CERTIFIED COMPANY

MODEL	TONNAGE	TABLE LENGTH	TABLE SIZE	WORKING HEIGHT	BENDING CAPACITY	CLEAR PASS	THROAT DEPTH	RAM STROKE	OPEN HEIGHT	APPROACH	RAM SPEED PROCESSING RETURN	OVERALL DIMENSION	WEIGHT K.G.	MOTOR HP
JCPB-515	50	1500	120X1500	900	4X1500	1100	200	150	350	90	7	1800X1400X2600	3000	7.5 HP
JCPB-525	50	2550	120X 2500	900	2.5X2500	2060	200	100	250	90	7	3000X1050X 1900	3500	7.5HP
JCPB-8025	80	2550	120X 2500	900	4X2500	2060	250	150	380	90	7	3100X1550X 2300	4500	7.5HP
JCPB-1125	110	2550	180X 2500	900	5X2500	2060	250	150	380	90	7	3100X1550X 2450	7800	10HP
JCPB-1130	110	3100	180X 3000	900	4.5X3000	2600	250	150	380	90	7	3400X1550X 2450	8200	10HP
JCPB-1140	110	4100	180X 4000	900	3.5X4000	3600	250	220	430	90	7	4400X1550X 2450	8500	10HP
JCPB-1625	160	2550	220X 2500	900	8X2500	2060	300	220	430	90	7	3100X1550X 2450	10200	15HP
JCPB-1630	160	3100	220X 3000	900	6.5X3000	2600	300	220	430	90	7	3400X1550X 2450	11000	15HP
JCPB-1640	160	4100	220X 4000	900	5X4000	3600	300	220	430	90	7	4400X1550X 2450	13000	20HP
JCPB-2230	220	3100	220X 3000	900	9X3000	2600	300	220	430	90	6	3400X1550X 2500	14000	20HP
JCPB-2240	220	4100	220X 4000	900	7X4000	3600	300	220	430	90	6	4400X1550X 2550	15000	20HP
JCPB-3040	300	4100	300X 4000	1000	9X4000	3600	300	220	430	80	5.5	4400X2100X 3200	18000	25HP
JCPB-3050	300	5100	300X 5000	1000	7.5X5000	4600	300	220	430	80	5.5	5400X2100X 3750	24000	25HP
JCPB-3060	300	6100	300X 6000	1000	6.3X6000	5600	300	220	430	80	5.5	6500X2100X 4200	32000	30HP
JCPB-4040	400	4100	300X 4000	1000	12X4000	3600	300	220	430	75	5	4400X2210X 3650	32500	30HP
JCPB-4050	400	4100	300X 5000	1000	10X5000	4600	300	270	430	75	5	5400X2210X 4350	37000	30HP
JCPB-4060	400	6100	300X 6000	1000	8.4X6000	5600	300	270	430	75	5	6500X2210X 4680	42000	30HP
JCPB-5050	500	5100	300X 5000	1000	12.5X5000	4600	300	330	430	100	6	5400X2525X 4200	39000	40HP
JCPB-5060	500	6100	300X 6000	1000	10.5X6000	5600	300	330	430	100	6	6500X2525X 4600	53000	40HP



## CNC Shear



● 3mm to 20mm ● Length : 1500 mm to 6500mm ● Application : Sheet Cutting

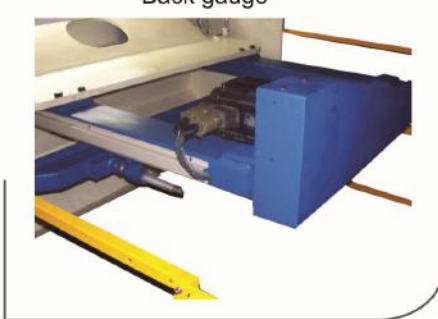
### **FEATURES :**

- Mono Block welded steel rigid to deflection tensile moment of high tensile material.
- Easy of accurate gap adjustment of blades for bur-free cuts.
- Motorized back gauge with electronic digital readout.
- Electronically adjustment RAKE ANGLE as per material thickness for twist free cuts.
- Synchronized beam guided system for constant gap between blades.
- Extra capacity to cut hard-thicker plate than nominal capacity.
- Blades produced from high alloying steel with four usable edge.
- Adjustable cutting & clamping force for quality cutting & power saving.
- Rapid cutting of short pieces by electrical stroke adjustment system.

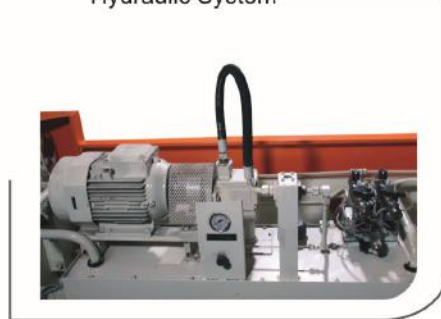
### **STANDARD FEATURES :**

- Two front supports for supporting longer plates
- Front operator motorized back gauge 1000mm travel with D.R.O.
- Compact, Low maintenance of silent hydraulic system.

Back gauge



Hydraulic System



Controller



### **STANDARD FEATURES :**

- Moving beam synchronized by differential cylinders.
- Hardened rollers guide beam for constant blade gap.
- Blade gap easily adjustable by calibrated levers.
- Rake angle adjustable to suit thickness and material.
- Activation from consol and movable foot switch.
- Sheet clamped hydraulically before cut starts.
- Stroke length - position can be set for short jobs.
- Beam returns on releasing foot switch for smaller cuts.
- First two hold downs spaced closer at both ends.
- Squaring arm 1000mm at left with hardened liners.
- Squaring arm 600mm at right helps distribute wear.

## CNC PLATE PUNCHING MACHINE



- Sheet Punching
- Thickness : 6mm to 25mm
- Ø 10mm to 50mm

### **STANDARD FEATURES :**

- Quick alignment of the plate.
- Easy loading and unloading.
- High speed operations with high accuracy.
- Automatic lubrication to the moving parts.
- Low maintenance towards no more human involvement.

### **MACHINE FRAME :**

- The frame is an assembly of a heavy steel plate consisting of 2 side frames, a upper and lower cam plate, reinforce sheet-metal plate for oil-tank and the hydraulic unit. After welding of the frame it is de-stressed. Some of the main features of this frame are :
- The machined cylinder mount is a integral part of the side-frame.
- The extra heavy side and rear plates provide superior frame stability.
- Ram electrical / hydraulic closed-loop servo system.

Control Panel



Automatic Lubrication System



Hydraulic Clamping System



MODEL	CP 577 505075	CP 757 755075	CP 777 757575	CP 10715 10075150	CP 15715
CAPACITY	50 TON	70 TON	70 TON	100 TON	150 TON
PRESS TYPE	C TYPE	C TYPE	C TYPE	C TYPE	CTYPE
MAX. PUNCHING AREA	500X750	5000X750	750X750	750X1500	750X1500
PUNCHING SIZE (M.S.)	Ø20X10mm	Ø25X16mm THIK	Ø25X16mm THIK	Ø25X20mm THIK	Ø40X20mm THIK
(H.T.)	Ø16X10mm	Ø20X16mm THIK	Ø20X16mm THIK	Ø25X16mm THIK	Ø30X25mm THIK
THROAT DEPTH	500mm	750mm	750mm	750mm	750mm
MOTOR	5HP	7.5HP	7.5HP	10HP	15HP
TABLE SIZE X	500mm	500mm	750mm	750mm	750mm
Y	750mm	750mm	750mm	1500mm	1500mm
SHEET WEIGHT	50KG.	60KG.	75KG.	200KG.	250KG.
CNC CONTROLLER	TWO AXIS	TWO AXIS	TWO AXIS	TWO AXIS	TWO AXIS
OIL TANK	120 LTRS.	250 LTRS.	250 LTRS.	250 LTRS.	250 LTRS.
NO. OF PUNCH	1	2	2	2	2
MARKING STATION	-	-	-	1 NO. (10 CHARACTER)	1 NO. (10 CHARACTER)
NO. OF CLAMP	2	2	2	3	3
WORKING HEIGHT	800mm	800mm	800mm	800mm	800mm

## CNC PLASMA CUTTING MACHINE



- Sheet Metal Profile Cutting
- Capacity : 6mm to 500mm
- Length : 1500mm to 25000mm

### **STANDARD FEATURES :**

- High Cutting Accuracy
- High and dynamic precision
- Positioning accuracy  $\pm 0.5$ mm
- Positioning speed max. 20,000 mm/min
- Cutting speed 0-25,000mm/min.

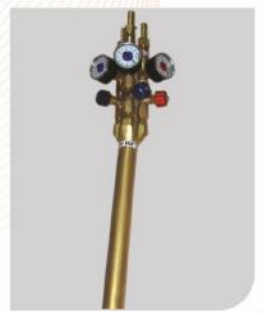
Cutting Torch



Combo Torch Station



Torch



Operating Console



Gas Console



**CNC PLASMA CUTTING MACHINE**

Model: Specification	JMCP 1530	JMCP 1565	JMCP 2040	JMCP 2065	JMCP 3040	JMCP 3065	JMCP 4050	JMCP 4080
Cutting length								
Width (mm)	1500	1500	2000	2000	3000	3000	4000	4000
Length (mm)	3000	6500	4000	6500	4000	6500	5000	8000
Cutting Thickness maxi. (mm)								
No. of Touch (No)	1	1	1	1	1	1	1	1
Touch lifting distance (mm)	150	150	150	150	150	150	150	150
CNC Controller (Make)	Jekson / Standard	Jekson / Standard	Jekson / Standard	Jekson / Standard	Jekson / Standard	Jekson / Standard	Jekson / Standard	Jekson / Standard
Height sensor (No)	1	1	1	1	1	1	1	1
Nesting Software	In built	In built	In built	In built	In built	In built	In built	In built
Master Slave Rail	Heavy Duty	Heavy Duty	Heavy Duty	Heavy Duty	Heavy Duty	Heavy Duty	Heavy Duty	Heavy Duty
Drive Mode [Servo Drive]	Single Sided	Single Sided	Dual Sided	Dual Sided	Dual Sided	Dual Sided	Dual Sided	Dual Sided
Rapid Speed (mm/min)	100 to 10000 mm	100 to 10000 mm	100 to 10000 mm	100 to 10000 mm	100 to 10000 mm	100 to 10000 mm	100 to 10000 mm	100 to 10000 mm
Straight line positioning precision (mm)	± 0.5mm/ 10mtr	± 0.5mm/ 10mtr	± 0.5mm/ 10mtr	± 0.5mm/ 10mtr	± 0.5mm/ 10mtr	± 0.5mm/ 10mtr	± 0.5mm/ 10mtr	± 0.5mm/ 10mtr
Straight line repeat precision (mm)	± 0.4mm/ 10mtr	± 0.4mm/ 10mtr	± 0.4mm/ 10mtr	± 0.4mm/ 10mtr	± 0.4mm/ 10mtr	± 0.4mm/ 10mtr	± 0.4mm/ 10mtr	± 0.4mm/ 10mtr
Working Height (mm)	750mm	750mm	750mm	750mm	750mm	750mm	750mm	750mm

**CNC OXY FUEL CUTTING MACHINE**

Model : Specification	JMCO 1530	JMCO 1565	JMCO 2040	JMCO 2065	JMCO 3040	JMCO 3065	JMCO 4050	JMCO 4080
Cutting Dimension								
Width (mm)	1500	1500	2000	2000	3000	3000	4000	4000
Length (mm)	3000	6500	4000	6500	4000	6500	5000	8000
Cutting thickness max. (mm)	150 mm Maximum							
No.of Touch	One Oxy Fuel Station							
Touch lifting distance (mm)	100							
CNC Controller	STANDARD MAKE							
Height Sensor	1 No.							
Cutting Mode	One Oxy Fuel Cutting							
Nesting Software	IN BUILT (Row / Column)							
Master Slave Rail	HEAVY DUTY							
Drive Mode [Servo Drive]	Single Sided / Dual Sided							
Rapid Speed (mm/min)	100 to 10000mm							
Straight line positioning precision	± 0.5mm/10mtrs							
Straight line repeat precision	± 0.4mm/10mtrs							
Working height	750mm							
Gas console	One Gas Console (Manual / Auto)							
Regulator - Oxygen	One Regulator for Oxygen							
Regulator-LPG	One Regulator for LPG							

**CNC OXY / PLASMA CUTTING MACHINE**

Sr. No.	Model : Specification	JMCOP 1530	JMCOP 1565	JMCOP 1850	JMCOP 2040	JMCOP 2065	JMCOP 3040	JMCOP 3065	JMCOP 4050	JMCOP 4080
1.	<b>Cutting Dimension</b>									
	Width (mm)	1500	1500	1800	2000	2000	3000	3000	4000	4000
	Length (mm)	3000	6500	5000	4000	6500	4000	6500	5000	8000
2.	<b>Cutting Thickness Maxi.</b>									
	Oxy Fuel (mm)	150mm								
	Plasma (mm)	Depend on power source up to 50mmthickness 50 mm. thickness								
3.	<b>No. Of Touch</b>									
	Oxy Fuel	One Oxy Fuel Cutting Station								
	Plasma	One Plasma Cutting Station								
4.	<b>Touch lifting distance</b>	150 mm								
5.	<b>CNC Controller</b>	STANDARD MAKE								
6.	<b>Height Sensor</b>									
	Oxy Fuel	One Height Sensor For Oxy Fuel								
	Plasma	One Height Sensor for Plasma								
7.	<b>Cutting Mode</b>									
	Oxy Fuel	One Oxy Fuel Cutting								
	Plasma	One Plasma Cutting Air								
8.	<b>Nesting Software</b>	In Built (Raw / Column)								
9.	<b>Master slave Rail</b>	Heavy Duty								
10.	<b>Drive Mode [servo Drive]</b>	Single Sided / Dual Sided								
11.	<b>Rapid Speed (mm/min.)</b>	100 to 10,000mm								
12.	<b>Straight Line Positioning precision</b>	±0.5mm/10mtrs								
13.	<b>Straight Line repeat Precision</b>	±0.4mm/10mtrs								
14.	<b>Working Height</b>	750 mm								
15.	<b>Gas Console</b>	One Gas Console								
16.	<b>Regulator-Oxygen</b>	One Regulator For Oxygen								
17.	<b>Regulator - LPG</b>	One Regulator For LPG								

**CUTTING THICKNESS / SPEED**

Out put current	15-30 A	20-45 A	20-65 A	25-85 A	30-100 A	40-200 A
<b>Handheld cut capacity</b>						
Minimum cut speed	6 mm	12 mm	19 mm	25 mm	32 mm	38 mm
Recommended	500 mm/min	500 mm/min	500 mm/min	500 mm/min	500 mm/min	500 mm/min
Minimum cut speed	10mm	19mm	25mm	32mm	38mm	50mm
Recommended	250 mm	250 mm	250 mm	250 mm	250 mm	250 mm
<b>Severance</b>						
Minimum cut speed	12mm	25mm	32mm	38mm	44mm	64mm
Recommended	125mm/min	125mm/min	125mm/min	125mm/min	125mm/min	125mm/min

## CNC WATERJET CUTTING MACHINE



- Cutting for any profile
- Shape any material like - Aluminum, Stainless Steel, Titanium, Marble, Glass

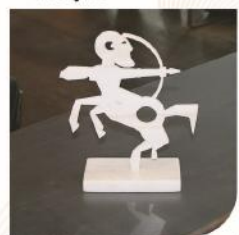
### **ADVANTAGES OF WATERJET CUTTING :**

- No heat affected zones, dust or fumes
- No tool sharpening
- Low tangential force on part
- Small cutting width (Kerf)
- Good cutting quality
- High speed cuts in many materials
- Cad/Cam Integration
- Environmentally safe

### **ADDITIONAL FEATURES :**

- Beveling Head
- Combo of Plasma / Oxy / Laser
- Water Purification System
- Primary Consumables Kit
- Preventive Maintenance Kit

Acrylic



Glass



Stainless Steel



Marble





High Pressure Pump



Cutting Head



Pressure Management System



Material	Thickness (mm)	0.17 mm	0.25 mm	0.30 mm	0.35 mm
Cutting Speed (mm/min.)					
Aluminum	5	315-470	595-855	750-1200	970-1470
	10	140-215	270-385	340-540	440-665
	20	65-95	120-175	155-245	200-300
Stainless Steel	5	110-160	205-295	255-410	335-505
	10	50-75	95-135	115-185	150-230
	20	25-35	45-60	55-85	70-105
Titanium	5	125-190	235-340	300-480	385-585
	10	60-85	105-150	135-215	175-265
	20	25-40	50-70	60-100	80-120
Marble	10	350-440	555-800	755-1130	910-1380
	20	160-200	255-360	320-510	410-625
	40	70-90	115-160	145-230	185-280
Glass	5	520-780	980-1420	1240-1995	1610-2440
	10	235-350	445-635	560-890	725-1100
	20	105-160	200-290	255-405	330-495

Model :	■ JET 1212	■ JET 1515	■ JET 1525	■ JET 2030	■ JET 2040
Cutting Area (mm)	1250 × 1250	1500 × 1500	1500 × 2500	2000 × 3000	2000 × 4000
Gantry Cross (mm) Travel (X Axis)	1250	1500	1500	2000	2000
Longitudinal (mm) table travel (Y Axis)	1250	1500	2500	3000	4000
Vertical travel (mm) (Z Axis)	200	200	200	200	200
Max. Speed (mtr./min.)	15	15	15	15	15
Position Acc.	± 0.1				
Position Repeat	± 0.1				
Cutting Feed Rate (mm)	10 - 300				
Rapid travel (mpr/min.)	10				

In this category all dimension & parameter may change as per material ; atmosphere ; selection and subject to change without any prior intimation.

## HYDRAULIC PRESS BRAKE



- Sheet Bending - Forming - Punching - Embossing
- Capacity : 20 Ton to 400 Ton ● Length : 1500mm to 6500mm

### **FEATURES :**

- Mono block welded steel frame ultra tested (Steel Structure from IS-2062 Plate).
- Steel plates rigid to provide accurate bending
- All pivots have hardened of ground pin bushes of five piece guide slide lubricated by central hand pump
- Repetitive accuracy is within +0.03mm Ram travel parallelism without using sensitive & complex servo hydraulics
- Most reliable hydraulic components & sealing for international reputed design for 350 bar against operating pressure of 160 bar maximum
- Three cycles operation inch, single cycle auto for greater operator convenience
- Three speed operation reduces ideal travel time which improves productivity
- Bending force easily adjustable from limits, for the pressure according to Bending material
- Movable operator console is provided with switches for cycle selection, ram up-down travel, emergency stop & motor on/off

Approach / Pressing / Return Limit Setting Assembly



Bending Pressure Adjustment



Automatic Lubrication System



Model	Tonnage	Table Length	Bending Cap. In MS, UTS 45kg/mm <sup>2</sup>	Table Width	Clear Pass	Ram Stroke	Open Height	Throat Depth	(SPEED) Approach Pressing Return	Power HP	Packing Dimension (L x W x H) mm	Approx Weight Kg.
<input type="checkbox"/> PBR215	20	1500	1.6 x 1500 / 2 x 1250	150	1050	100	250	100	35-9-35	2	1700 x 1050 x 1900	1500
<input type="checkbox"/> PBR315	30	1500	2 X 1500 / 3 X 1250	150	1050	100	250	100	30-7-30	3	1700 x 1150 x 1900	1700
<input type="checkbox"/> PBR320	30	2000	2 x 2000 / 3 x 1250	150	1550	100	250	200	30-7-30	3	2200 x 1150 x 1900	2000
<input type="checkbox"/> PBR325	30	2500	1.6 x 2500 / 2 X 2000	150	2050	100	250	200	30-7-30	3	2700 X 1150 X 1900	2200
<input type="checkbox"/> PBR415	40	1500	3 x 1500 / 4 X 1200	150	1050	100	250	200	40-8-40	3	1700 X 1150 X 1900	1900
<input type="checkbox"/> PBR420	40	2000	2.5 x 1500 / 3 X 1200	150	1550	100	250	200	40-8-40	3	2200 X 1200 X 1900	2500
<input type="checkbox"/> PBR425	40	2500	2 x 2500 / 3 x 1500	150	2050	100	250	200	40-8-40	3	2700 x 1150 x 1900	3000
<input type="checkbox"/> PBR515	50	1500	4 x 1500 / 5 x 1250	190	1050	100	250	200	35-7-35	5	1700 x 1050 x 1900	2500
<input type="checkbox"/> PBR520	50	2000	3 x 2000 / 4 x 1500	190	1550	100	250	200	35-7-35	5	2200 x 1050 x 1900	3200
<input type="checkbox"/> PBR525	50	2500	2.5 x 2500 / 3 x 2000	190	2050	100	250	200	35-7-35	5	2700 x 1050 x 1900	3500
<input type="checkbox"/> PBR615	65	1500	5 x 1500	190	1050	150	330	200	30-5-40	5	1700 X 1200 X 2000	2500
<input type="checkbox"/> PBR620	65	2000	4 x 2000	190	1050	150	330	200	30-5-40	5	2200 X 1200 X 2000	3000
<input type="checkbox"/> PBR625	65	2500	3 x 2500 / 4 x 2000	190	2050	150	330	200	30-5-30	5	2700 x 1200 x 2000	3700
<input type="checkbox"/> PBR630	65	3050	2.5 x 3000 / 3 x 2500	190	2550	150	330	200	30-5-30	5	3350 x 1200 x 2000	4300
<input type="checkbox"/> PBR820	80	2000	5 x 2000 / 6 X 1500	190	1550	150	330	200	38-6-45	7.5	1700 X 1550 X 2300	3800
<input type="checkbox"/> PBR825	80	2500	4 x 2500 / 5 x 2000	190	2050	150	330	200	38-6-45	7.5	2700 x 1550 x 2300	4500
<input type="checkbox"/> PBR830	80	3000	3 x 3000 / 4 x 2500	190	2550	150	330	200	38-6-45	7.5	3350 x 1550 x 2300	5000
<input type="checkbox"/> PBR840	80	4000	2.5 x 4000	190	3250	150	330	200	38-6-45	7.5	4350 X 1550 X 2300	6200
<input type="checkbox"/> PBR1020	100	2000	6 x 2000 / 8 X 1200	190	1550	150	330	200	38-6-45	7.5	2200 X 1550 X 2300	5000
<input type="checkbox"/> PBR1025	100	2500	5 x 2500 / 6 x 2000	190	2050	150	330	200	38-6-45	7.5	2700 x 1550 x 2300	5400
<input type="checkbox"/> PBR1030	100	3050	4 x 3000 / 5 x 2000	190	2550	150	330	200	38-6-45	7.5	3350 x 1550 x 2300	6200
<input type="checkbox"/> PBR1040	100	4050	3 x 4000 / 4 x 3000	190	3250	150	330	200	38-6-45	7.5	4250 x 1650 x 2300	7000
<input type="checkbox"/> PBR1225	125	2500	6 x 2500 / 8 x 2000	250	2150	150	350	300	38-5-40	10	2750 x 1650 x 2500	6500

Model	Tonnage	Table Length	Bending Cap. In MS, UTS 45kg/mm2	Table Width	Clear Pass	Ram Stroke	Open Height	Throat Depth	(SPEED) Approach Pressing Return	Power HP	Packing Dimension (L x W x H) mm	Approx Weight Kg.
<input type="checkbox"/> PBR1230	125	3050	5 x 3000 / 6 x 2500	250	2650	150	350	300	38-5-40	10	3350 x 1650 x 2500	7000
<input type="checkbox"/> PBR1240	125	4050	4 x 4000 / 5 x 3000	250	3250	150	350	300	38-5-40	10	4200 x 1650 x 2500	8300
<input type="checkbox"/> PBR1625	160	2500	8 x 2500 / 10 x 2000	230	2150	150	350	300	35-6-40	15	2750 x 1800 x 2600	8200
<input type="checkbox"/> PBR1630	160	3050	6 x 3000 / 8 x 2500	230	2650	150	350	300	35-6-40	15	3350 x 1800 x 2600	8800
<input type="checkbox"/> PBR1640	160	4050	5 x 4000 / 6 x 3000	230	3250	150	350	300	35-6-40	15	4350 x 2050 x 2750	9800
<input type="checkbox"/> PBR2025	200	2500	10 x 2500 / 12 x 2000	230	2150	200	400	300	35-7-45	20	2850 x 2050 x 2750	9500
<input type="checkbox"/> PBR2030	200	3050	8 x 3000 / 10 x 2500	230	2650	200	400	300	35-7-45	20	3350 x 2050 x 2750	10500
<input type="checkbox"/> PBR2040	200	4050	6 x 4000 / 8 x 3000	230	3250	200	400	300	35-7-45	20	4350 x 2050 x 2750	12500
<input type="checkbox"/> PBR2525	250	2500	12 x 2500	300	2050	200	400	300	35-7-45	20	2750 X 2100 X 2750	10000
<input type="checkbox"/> PBR2530	250	3050	10 x 3000 / 12 x 2500	300	2650	200	400	300	35-6-40	25	3350 x 2100 x 2800	12000
<input type="checkbox"/> PBR2540	250	4050	8 x 4000 / 10 x 3000	300	3250	200	400	300	35-6-40	25	4350 x 2100 x 2800	13500
<input type="checkbox"/> PBR3025	300	2500	12 x 2500 / 16 x 2000	300	2100	200	400	300	30-6-35	30	2850 x 2150 x 2900	10500
<input type="checkbox"/> PBR3030	300	3050	12 x 3000 / 15 x 2500	300	2650	200	400	300	30-6-35	30	3350 x 2150 x 2900	12000
<input type="checkbox"/> PBR3040	300	4050	10 x 4000 / 12 x 3000	300	3250	200	400	300	30-6-35	30	4350 x 2150 x 2900	15000

Model	Tonnage	Table Length	Bending Cap. In MS, UTS 45kg/mm2	Table Width	Clear Pass	Ram Stroke	Open Height	Throat Depth	(SPEED) Approach Pressing Return	Power HP	Packing Dimension (L x W x H) mm	Approx Weight Kg.
<input type="checkbox"/> PBR1650	160	5000	4 X 5000/5 X 4000	230	4250	150	350	300	60-5-60	15	5350 X 2050 X 2750	11000
<input type="checkbox"/> PBR1660	160	6000	3 X 6000/4 X 5000	230	5250	150	350	300	60-5-60	15	6350 X 2050 X 2750	13000
<input type="checkbox"/> PBR2050	200	5000	5 X 5000	230	4250	200	400	300	60-5-60	20	5350 X 2050 X 2750	14000
<input type="checkbox"/> PBR2060	200	6000	4 X 6000	230	5250	200	400	300	60-5-60	20	6350 X 2050 X 2750	15000
<input type="checkbox"/> PBR2550	250	5000	6 X 500/8 X 4000	300	4250	200	400	300	60-5-60	25	5350 X 2100 X 2800	15000
<input type="checkbox"/> PBR2560	250	6000	5 X 6000/6 X 5000	300	5250	200	400	300	60-5-60	25	6350 X 2100 X 2800	17000
<input type="checkbox"/> PBR3050	300	5000	7 X 5000/9 X 7000	300	4100	200	400	300	30-6-35	30	5350 X 2150 X 2900	27000
<input type="checkbox"/> PBR3060	300	6000	6 X 6000/8 X 4500	300	5250	200	400	300	30-6-35	30	6350 X 2150 X 2900	30000
<input type="checkbox"/> PBR4030	400	3050	16 X 3000/20 X 2500	300	2650	250	500	350	30-5-35	40	3350 X 2200 X 3000	18000
<input type="checkbox"/> PBR4040	400	4050	12 X 4000/16 X 3000	300	3250	250	500	350	30-5-35	40	4350 X 2200 X 3000	19500
<input type="checkbox"/> PBR4050	400	5000	10 X 5000/12 X 4000	300	4100	250	500	350	60-5-60	40	5350 X 2250 X 3600	32500
<input type="checkbox"/> PBR4060	400	6000	8 X 6000/10 X 5000	300	5100	250	500	350	60-5-60	40	6350 X 2350 X 4000	37000
<input type="checkbox"/> PBR5030	500	3000	20 X 3000/25 X 2500	300	2600	250	500	350	60-5-60	50	3350 X 2200 X 3200	35000
<input type="checkbox"/> PBR5040	500	4000	15 X 4000/20 X 3000	300	3100	250	500	550	60-5-60	50	4500 X 2200 X 3300	40000
<input type="checkbox"/> PBR5050	500	5000	14 X 5000/15 X 4000	300	4100	250	500	300	60-5-60	50	5350 X 2400 X 3900	43000
<input type="checkbox"/> PBR5060	500	6000	10 X 6000/14 X 5000	300	5100	250	500	350	60-5-60	50	6350 X 2500 X 4250	50000

## HYDRAULIC SHEAR



- Sheet Cutting
- Capacity : 3mm to 20mm
- Length : 1500mm to 6500mm

### **FEATURES :**

- Mono block welded steel fram ultra tested (Steel Structure from IS-2062 Plate.)
- Steel plates rigid to provide accurate cutting
- All pivots have hardened of ground pin bushes of five piece guide slide lubricated by central hand pump
- Repetitive accuracy is within +0.03mm Ram travel parallelism without using sensitive & complex servo hydraulics
- Most reliable hydraulic components & sealing for international reputed design for 350 bar against operating pressure of 160 bar maximum
- Three cycles operation inch, single cycle & auto for grater operator convenience
- Three speed operation reduces ideal travel time which improves productivity
- Cutting force easily adjustable from front for Burr free cutting of the material

Ball Caster



Electric Panel



Limit Switch Assembly



Model	Shearing Length	Nominal Rake Angle (MS/SS)	Maximum Rake Angle (MS/SS)	Rake Angle	Rake Angle Range	Strokes/ Minute At Min. & Max Rake Angle	Hold downs	Power HP	Packing Dimension (L x W x H) mm	Approx Weight
<input type="checkbox"/> HVR215	1500	2-1.	3-1.2.	1°37'	0.5-2°	25-15	8	3	2250X1850X2050	1200
<input type="checkbox"/> HVR220	2000	2-1.	3-1.2.	1°37'	0.5-2°	25-15	11	3	2700X1250X1950	1500
<input type="checkbox"/> HVR225	2500	2-1.	3.15-1.6.	1°37'	0.5-2°	22-10	13	3	2900 x 1600 x 1500	2500
<input type="checkbox"/> HVR230	3000	2-1.	3.15-1.6.	1°37'	0.5-2°	18-8	15	3	3400 x 1600 x 1500	2800
<input type="checkbox"/> HVR315	1500	3.15-1.6.	4-2.	1°37'	0.5-2°	24-10	8	5	2250 x 1850 x 2050	2000
<input type="checkbox"/> HVR320	2000	3.15-1.6.	4-2.	1°37'	0.5-2°	20-11	11	3	2700 x 1250 x 1950	2100
<input type="checkbox"/> HVR325	2500	3.15-1.6.	4-2.	1°37'	0.5-2°	28-13	13	5	3200 x 1850 x 1950	2500
<input type="checkbox"/> HVR330	3000	3.15-1.6.	4-2.	1°37'	0.5-2°	24-9	15	5	3700 x 1850 x 1950	3000
<input type="checkbox"/> HVR340	4000	3.15-1.6.	4-2.	1°37'	0.5-2°	20-7	20	7.5	4300X1850X1950	3500
<input type="checkbox"/> HVR415	1500	4-3.	6-4.	1°37'	0.5-3°	24-10	8	5	2250 x 1850 x 2050	3200
<input type="checkbox"/> HVR420	2000	4-3.	6-4.	1°37'	0.5-3°	24-10	11	7.5	2750 x 1850 x 2050	3500
<input type="checkbox"/> HVR425	2500	4-3.	6-4.	1°37'	0.5-3°	22-8	13	7.5	3300 x 2250 x 2400	5000
<input type="checkbox"/> HVR430	3000	4-3.	6-4.	1°37'	0.5-3°	22-8	15	10	3700 x 2250 x 2400	6000
<input type="checkbox"/> HVR440	4000	4-3.	6-4.	1°45'	0.5-3°	18-6	20	10	4500 x 2250 x 2400	6500
<input type="checkbox"/> HVR450	5000	4-3.	6-4.	1°45'	0.5-3°	12-6.	24	10	5500X2250X2700	7000
<input type="checkbox"/> HVR460	6000	4-3.	6-4.	1°45'	0.5-3°	10-7.	30	15	6500X2250X2900	8000
<input type="checkbox"/> HVR615	1500	6-4.	8-6.	1°45'	0.5-3°	24-8	8	10	2250 x 1900 x 2100	4000
<input type="checkbox"/> HVR620	2000	6-4.	8-6.	1°45'	0.5-3°	22-7	11	10	2750 x 1900 x 2100	4300
<input type="checkbox"/> HVR625	2500	6-4.	8-6.	1°45'	0.5-3°	28-8	13	15	3300 x 2250 x 2500	6000
<input type="checkbox"/> HVR630	3000	6-4.	8-6.	1°45'	0.5-3°	24-6	15	15	3800 x 2250 x 2500	6500
<input type="checkbox"/> HVR640	4000	6-4.	8-6.	2°	0.5-3°	24-6	20	20	4800 x 2250 x 2500	8200
<input type="checkbox"/> HVR650	5000	6-4.	8-6.	2°	0.5-3°	12-6.	24	20	5800X2250X2700	9000
<input type="checkbox"/> HVR660	6000	6-4.	8-6.	2°	0.5-3°	10-7.	30	2	6800X2200X2800	9600
<input type="checkbox"/> HVR815	1500	8-6.	10-8.	2°	0.5-3°	22-10	8	15	2250 x 2050 x 2200	5200
<input type="checkbox"/> HVR820	2000	8-6.	10-8.	2°	0.5-3°	18-8	11	15	2750 x 2050 x 2200	6000
<input type="checkbox"/> HVR825	2500	8-6.	10-8.	2°	0.5-3°	24-8	13	20	3300 x 2350 x 2600	7500
<input type="checkbox"/> HVR830	3000	8-6.	10-8.	2°	0.5-3°	20-6	15	20	3800 x 2350 x 2600	9000
<input type="checkbox"/> HVR840	4000	8-6.	10-8.	2°	0.5-3°	20-8	20	25	4800 x 2350 x 2600	12500
<input type="checkbox"/> HVR850	5000	8-6.	10-8.	2°	0.5-3°	12-6	24	25	5800 x 2350 x 2900	14000
<input type="checkbox"/> HVR860	6000	8-6.	10-8.	2°	0.5-3°	10-7	30	25	6800 x 2350 x 2900	15000
<input type="checkbox"/> HVR1015	1500	10-8.	13-10.	2°	0.5-3°	20-10	8	15	2250 x 2050 x 2300	6000
<input type="checkbox"/> HVR1020	2000	10-8.	13-10.	2°	0.5-3°	18-8	11	15	2750 x 2050 x 2300	7000
<input type="checkbox"/> HVR1025	2500	10-8.	13-10.	2°	0.5-3°	24-8	13	20	3300 x 2500 x 2800	9000
<input type="checkbox"/> HVR1030	3000	10-8.	13-10.	2°	0.5-3°	20-6	15	20	3800 x 2500 x 2800	11500
<input type="checkbox"/> HVR1040	4000	10-8.	13-10.	2°	0.5-3°	18-6	20	30	4800 x 2500 x 2800	15000
<input type="checkbox"/> HVR1050	5000	10-8.	13-10.	2°	0.5-3°	12-6	24	30	5800 x 2350 x 2900	17000
<input type="checkbox"/> HVR1060	6000	10-8.	13-10.	2°	0.5-3°	10-6	30	30	6800 x 2350 x 2900	19000
<input type="checkbox"/> HVR1315	1500	13-10.	16-13.	2°	0.5-3°	20-10	8	20	2050 x 2050 x 2400	7000
<input type="checkbox"/> HVR1320	2000	13-10.	16-13.	2°	0.5-3°	13-5	11	20	2750 x 2200 x 2500	7000
<input type="checkbox"/> HVR1325	2500	13-10.	16-13.	2°	0.5-3°	15-10	13	25	3350 x 2600 x 2800	9000
<input type="checkbox"/> HVR1330	3000	13-10.	16-13.	2°	0.5-3°	12-6'	15	25	3800 x 2600 x 2800	12000
<input type="checkbox"/> HVR1340	4000	13-10.	16-13.	2°	0.5-3°	10-4'	20	30	4850 x 2200 x 2800	15500
<input type="checkbox"/> HVR1350	5000	13-10.	16-13.	2°	0.5-3°	13-7	25	30	5850 x 2200 x 2800	21000
<input type="checkbox"/> HVR1360	6000	13-10.	16-13.	2°	0.5-3°	13-7	30	30	6850 x 2200 x 2800	23000
<input type="checkbox"/> HVR1615	1500	16-13	20-16	2°	0.5-3°	13-7	8	25	2250 x 2050 x 2300	10000
<input type="checkbox"/> HVR1620	2000	16-13	20-16	2°	0.5-3°	13-7'	11	-	2750 x 2200 x 2600	12000
<input type="checkbox"/> HVR1625	2500	16-13	20-16	2°	0.5-3°	15-8	13	-	3500 x 2600 x 2900	15000
<input type="checkbox"/> HVR1630	3000	16-13	20-16	2°	0.5-3°	12-6'	15	30	4000 x 2600 x 2900	17000
<input type="checkbox"/> HVR1640	4000	16-13	20-16	2°	0.5-3°	10-4'	20	30	5100 x 2750 x 2900	20000
<input type="checkbox"/> HVR1650	5000	16-13	20-16	2°	0.5-3°	10-5	40	30	5850 x 2200 x 2800	24000
<input type="checkbox"/> HVR1660	6000	16-13	20-16	2°	0.5-3°	10-5	40	30	6850 x 2200 x 2800	29000
<input type="checkbox"/> HVR1670	7000	16-13	20-16	2°	0.5-3°	10-4	40	40	7850 x 2200 x 3200	32000
<input type="checkbox"/> HVR2020	2000	20-16.	25-20	2°	0.5-3°	16-8	11	40	2900 x 2500 x 2600	17000
<input type="checkbox"/> HVR2025	2500	20-16.	25-20	2°	0.5-3°	15-8	13	40	3500 x 2750 x 3000	18000
<input type="checkbox"/> HVR2030	3000	20-16.	25-20	2°	0.5-3°	12-6'	15	40	4000 x 2750 x 3000	20000
<input type="checkbox"/> HVR2040	4000	20-16	25-20	2°	0.5-3°	10-4'	20	50	5100 x 2800 x 3000	24000

## HYDRAULIC PRESS "C" TYPE

- Punching
- Forming
- Straightening
- Stamping
- Embossing
- Bending
- Cutting



- Capacity : 15 Ton to 150 Ton

Hydraulic Clamping



Hydraulic System



Electric Panel



Punching Attachment



### **STANDARD SUPPLY :**

- Main drive motor
- Electric control panel with INCH & SINGLE CYCLE AUTO OPERATION
- Fine stroke adjustment rod with limit switch

Capacity	■ 30 TON	■ 50 TON	■ 75 TON	■ 100 TON	■ 120 TON	■ 150 TON
Press Type	C - Type	C - Type	C - Type	C - Type	C - Type	C - Type
Tool Mounting RAM	Adaptor Type	Adaptor Type	Ram Plate 300x400	Ram Plate 300 x400	Ram Plate 300x450	Ram Plate 300x600
Table Size	300x500mm	300x400mm	300x550mm	300x550mm	300x600mm	300x700mm
Working Height	850mm	850mm	850mm	850mm	800mm	800mm
Throat Depth	200mm	200mm	250mm	250mm	250mm	250mm
Motor Speed Stroke	3 H P 20 stroke/min. (At 25 mm. stroke)	5 H P 20 stroke/min. (At 25 mm. stroke)	7.5 H P 25 stroke/min. (At 25 mm. stroke)	10 H P 22 stroke/min. (At 25 mm. stroke)	15 H P 20 stroke/min. (At 25 mm. stroke)	15 H P 15 stroke/min. (At 25 mm. stroke)
Working Pressure	200Kgs	200Kgs	210Kgs	210Kgs	210Kgs	210Kgs
Type Of Operation	Vertical	Vertical	Vertical	Vertical	Vertical	Vertical
Open Daylight	300mm	300mm	300mm	300mm	375mm	400mm
Oil Tank Capacity	80 Ltrs	100 Ltrs	180 Ltrs	200 Ltrs	250 Ltrs	250 Ltrs
Dimension	1000x750x1300 (L x W x H)	1000x750x1300 (L x W x H)	1500x900x1600 (L x W x H)	1500x900x1600 (L x W x H)	1500x900x1700 (L x W x H)	1500x900x1800 (L x W x H)

## HYDRAULIC PRESS "H" TYPE

- Punching
- Forming
- Straightening
- Stamping
- Embossing
- Cutting

- Capacity : 20 Ton to 1000 Ton



In this category all dimension & parameter may change as per material ; atmosphere ; selection and subject to change without any prior intimation.



## ANGLE SHEARING MACHINE

Electric Panel



Hydraulic System



Oil Chiller



Special Die



- Angle Cutting ● Capacity : 60 Ton to 160 Ton
- Angle Size : 100x100x10 to 150x150x16

### **STANDARD SUPPLY :**

- Main drive motor
- Electric control panel with INCH & SINGLE CYCLE AUTO OPERATION
- Fine stroke adjustment rod with limit switch
- Blade mounting with machine
- Automatic Pressure Adjustment

Capacity	80 TON	100 TON	120 TON	220 TON
Angle Size	65× 65× 6mm	75× 75 × 6mm	90× 90 × 10mm	150× 150 × 16mm
Oil Tank Capacity	100 Ltrs	160 Ltrs	160 Ltrs	200 Ltrs
Type Of Operation	<b>Vertical</b>	<b>Vertical</b>	<b>Vertical</b>	<b>Vertical</b>
Motor Speed	5 H P	7.5 H P	10 H P	15 H P
Working Pressure	200 Kg	200 Kg	220 Kg	220 Kg
Stroke Per Minute	15	15	15	15
Working Height	850mm	850mm	850mm	850mm
Dimension	750×750×1500 (L × W × H)	1000×750×1600 (L × W × H)	1200×1000×2000 (L × W × H)	1500×1000×2000 (L × W × H)

## ANGLE STAMPING MACHINE



● Marking ● Numbering ● Stamping

### STANDARD SUPPLY :

- Main drive motor
- Stamping holder 16mm stamp size
- Electric control panel with INCH & SINGLE CYCLE AUTO OPERATION
- Stroke adjustment rod with limit switch
- Stamp letter & number
- Foot Switch

Capacity	■ 75 TON	■ 100 TON	■ 120 TON	■ 150 Ton
Press Type	C - Type	C - Type	C - Type	C - Type
Number Stamping	08 Characters	12 Characters	14 Characters	18 Character
Depth Of Characters	1 MM (Adjustable)	1 MM (Adjustable)	1 MM (Adjustable)	1 MM (Adjustable)
Table Size	300 × 550mm	300 × 550mm	300 × 600mm	300×700mm
Bolster Area (L.R × F.B)	600 × 200mm	600 × 200mm	600 × 200mm	600 × 200mm
Open Daylight	300mm	300mm	375mm	400mm
Throat Depth	250mm	250mm	250mm	250mm
Cyl Stroke	50mm (Adjustable)	50mm (Adjustable)	50mm (Adjustable)	50mm (Adjustable)
No. Of Stroke	25 Strokes/ Min (At 25mm Length)	22 Strokes/ Min (At 25mm Length)	20 Strokes/ Min (At 25mm Length)	15 Strokes/ Min (At 25mm Length)
Working Height	850mm	850mm	800mm	800mm
Working Pressure	210 Kgs	210 Kgs	210 Kgs	210 Kgs
Oil Tank Capacity	180 Ltrs	200 Ltrs	250 Ltrs	250 Ltrs
Motor 3 Phase 440 V	7.5 H P	10 H P	10 H P	15 HP
3 Speed	Fast Approach Pressing / Return	Fast Approach Pressing / Return	Fast Approach Pressing / Return	Fast Approach Pressing / Return

## ANGLE STAMPING MACHINE



● Marking ● Numbering ● Stamping

### STANDARD SUPPLY :

- Main drive motor
- Stamping holder 16mm stamp size
- Electric control panel with INCH & SINGLE CYCLE AUTO OPERATION
- Stroke adjustment rod with limit switch
- Stamp letter & number
- Foot Switch

Capacity	■ 75 TON	■ 100 TON	■ 120 TON	■ 150 Ton
Press Type	C - Type	C - Type	C - Type	C - Type
Number Stamping	08 Characters	12 Characters	14 Characters	18 Character
Depth Of Characters	1 MM (Adjustable)	1 MM (Adjustable)	1 MM (Adjustable)	1 MM (Adjustable)
Table Size	300 × 550mm	300 × 550mm	300 × 600mm	300×700mm
Bolster Area (L.R × F.B)	600 × 200mm	600 × 200mm	600 × 200mm	600 × 200mm
Open Daylight	300mm	300mm	375mm	400mm
Throat Depth	250mm	250mm	250mm	250mm
Cyl Stroke	50mm (Adjustable)	50mm (Adjustable)	50mm (Adjustable)	50mm (Adjustable)
No. Of Stroke	25 Strokes/ Min (At 25mm Length)	22 Strokes/ Min (At 25mm Length)	20 Strokes/ Min (At 25mm Length)	15 Strokes/ Min (At 25mm Length)
Working Height	850mm	850mm	800mm	800mm
Working Pressure	210 Kgs	210 Kgs	210 Kgs	210 Kgs
Oil Tank Capacity	180 Ltrs	200 Ltrs	250 Ltrs	250 Ltrs
Motor 3 Phase 440 V	7.5 H P	10 H P	10 H P	15 HP
3 Speed	Fast Approach Pressing / Return	Fast Approach Pressing / Return	Fast Approach Pressing / Return	Fast Approach Pressing / Return

## ANGLE NOTCHING MACHINE

Electric Panel



Hydraulics System



Sample



- Angle Corner Cutting "V" notching
- Capacity : 45 Ton to 70 Ton

### STANDARD SUPPLY :

- Blade mounted with machine
- stroke adjustment rod with limit switch
- Electric control panel with INCH & SINGLE CYCLE AUTO OPERATION
- Main drive motor

CAPACITY	45 TON	70 TON	100 TON	150 TON
Cutting Flange H.T	100×100×8mm	150×150×12mm	200×200×16mm	300×200×16mm
Cutting flag M.S	100×100×10mm	150×150×16mm	200×200×20mm	300×200×20mm
Length of Cut MM	100	200	220	300
Working Height	850mm	850mm	850mm	850mm
No Of Stroke	10 Strokes / Min	15 Strokes / Min	20 Strokes / Min	10 Strokes / Min
Motor	7.5 H P	7.5 H P	10 H P	15 H P
Working Pressure	180 Kg	200 Kg	200 Kg	220 Kg
Type of Operation	Vertical & Rotating	Vertical & Rotating	Vertical & Rotating	Vertical & Rotating
Oil Tank	100 Ltrs	160 Ltrs	200 Ltrs	250 Ltrs
Over all dimension MM	1500×1000×1500 (L × W × H)	2000×1500×1700 (L × W × H)	2000×1500×1700 (L × W × H)	2200×1500×1800 (L × W × H)

## HORIZONTAL BENDING PRESS



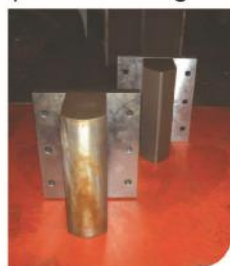
Standard Die/Punch



Electric Panel



Special Tooling



### SPECIFICATIONS :

1. Capacity	:	<input type="checkbox"/> 100 Ton	<input type="checkbox"/> 150 Ton
2. Type	:	Horizontal Type	Horizontal Type
3. Open Height	:	850mm	850mm
4. Ram Stroke	:	400mm	400mm
5. Table Plate	:	500 x 900mm	500 x 900mm
5. Bolster Area (LR X FB)	:	500 x 500mm	500 x 500mm
6. Working Height	:	600mm	600mm
7. Speed			
Approach	:	35mm/Sec	35mm/Sec
Pressing	:	04mm/Sec	04mm/Sec
Return	:	70mm/Sec	70mm/Sec
8 Working Pressure	:	180 Kgs	180 Kgs
9 Oil Tank Capacity	:	300 Ltrs	500 Ltrs
10. Motor	:	10 H P	15 H P
11. Approx. Weight	:	4000Kg.	5000Kg.

### STANDARD SUPPLY :

- Main drive motor
- Electric control panel with INCH & SINGLE CYCLE AUTO OPERATION
- Stroke adjustment rod with limit switch
- Operating Console

## CNC ROUTER



- 2D & 3D art making
- Die mould making

### STANDAR SUPPLY :

- Tool Kit : 1 No.
- Accessory KIT : 1 No.

### OPTIONAL SUPPLY & FACILITY :

- Hand Wheel
- Tools & End Mills
- Table Fixtures
- High Configuration Computer
- System C13, 4GB RAM
- Additional Spindle
- Touch Screen Controller
- Dust Collection
- Safety Sensor
- Color System

### SPECIFICATIONS :

<b>Model</b>	:
<b>Working Area</b>	:
<b>Width</b>	: 1250mm
<b>Length</b>	: 2500mm
<b>Height</b>	:
<b>Thickness</b>	: 150mm
<b>No. of Spindle :</b>	
<b>Spindle</b>	: 1 No.(HSD 6KW Italy Make)
<b>Cooling System</b>	: (Air / Water)
<b>CNC Controller</b>	: PC Based (NC Studio with Nesting)
<b>Nesting Software</b>	: In Built
<b>Master Slave Travel</b>	: Heavy Duty (Rack, Pinion, Linier & Guide Ways)
<b>Drive Mode [Servo Drive]</b>	: Double Sided (Stepper / Servo)
<b>Rapid Speed</b>	: 100 to 2500mm Straight line Positioning
	Precision : 0.050mm/10mtrs
<b>Straight line repeat precision</b>	: 0.040mm/10mtrs
<b>Working height</b>	: 750mm
<b>Power</b>	: 6.5Kw
<b>Approx Weight</b>	: 1100Kg.

## HEEL CUTTING

Sample



Controller



- Heel Milling
- Capacity : 5mm to 25mm

## ANGLE PROCESSING MACHINERY

Notching Application



Punching Application



Stamping Application



### **STANDAR SUPPLY :**

- Main drive Motor
- Electric control panel with INCH & SINGLE CYCLE AUTO OPERATION
- Stroke adjustment with NC Controller
- Servo motor used for liner motion
- Controller will be touch screen & very user friendly

In this category all dimension & parameter may change as per material ; atmosphere ; selection and subject to change without any prior intimation.

## SPECIAL PURPOSE MACHINE

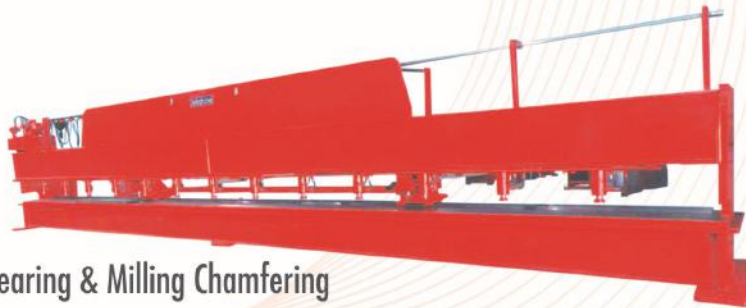
### Extra Long Milling Machine

- Plate Milling & Chamfering
- Thicknees 50mm to 150mm
- Length 6000mm to 18000mm



### Plano Shear

- Plate Shearing & Milling Chamfering
- Thicknees : 50mm to 150mm
- Length : 6000mm to 18000mm



### Iron Worker



- Rod
- Flat Cutting
- Angle
- Punching Machine
- Channel

### Tube Processing Machine :

#### Tube Bending

- Capacity : Ø 8mm to 50mm



#### Tube Punching

- Capacity : Ø 8mm to 20mm.
- Distance 5mm to 3500mm



#### Tube Threading

- Capacity : Ø 16mm to 35mm.
- Pitch : Variable





**Bellow Forming Machine**

- Capacity : Ø 250 to 1500
- Length : 200mm to 2000mm



**Application**



**Pillar Press**

- Forming & Embossing
- Capacity : 50 Ton to 700 Ton



**Bus Bar Cutting**



- Bus Bar Cutting
- Bending
- Punching
- Thickness 3mm to 25mm Plate (Copper)

**Elbow Beveling Machine**

**Application**



- Capacity : 60mm to 1200mm
- Elbow Machining / Champhering

In this category all dimension & parameter may change as per material ; atmosphere ; selection and subject to change without any prior intimation.

**Jekshine**<sup>®</sup>

**Jekson Machinery Pvt.Ltd.**

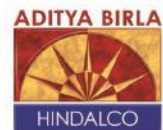
An ISO 9001-2008 CERTIFIED COMPANY



**ALSO WORLDWIDE DEALS WITH :**

- KENYA
- GERMANY
- SAUDI ARABIA
- HONG KONG
- CHINA
- DUBAI
- NEPAL
- AUSTRALIA
- SINGAPORE
- USA
- U.A.E.
- and more...

**KEY CUSTOMER**

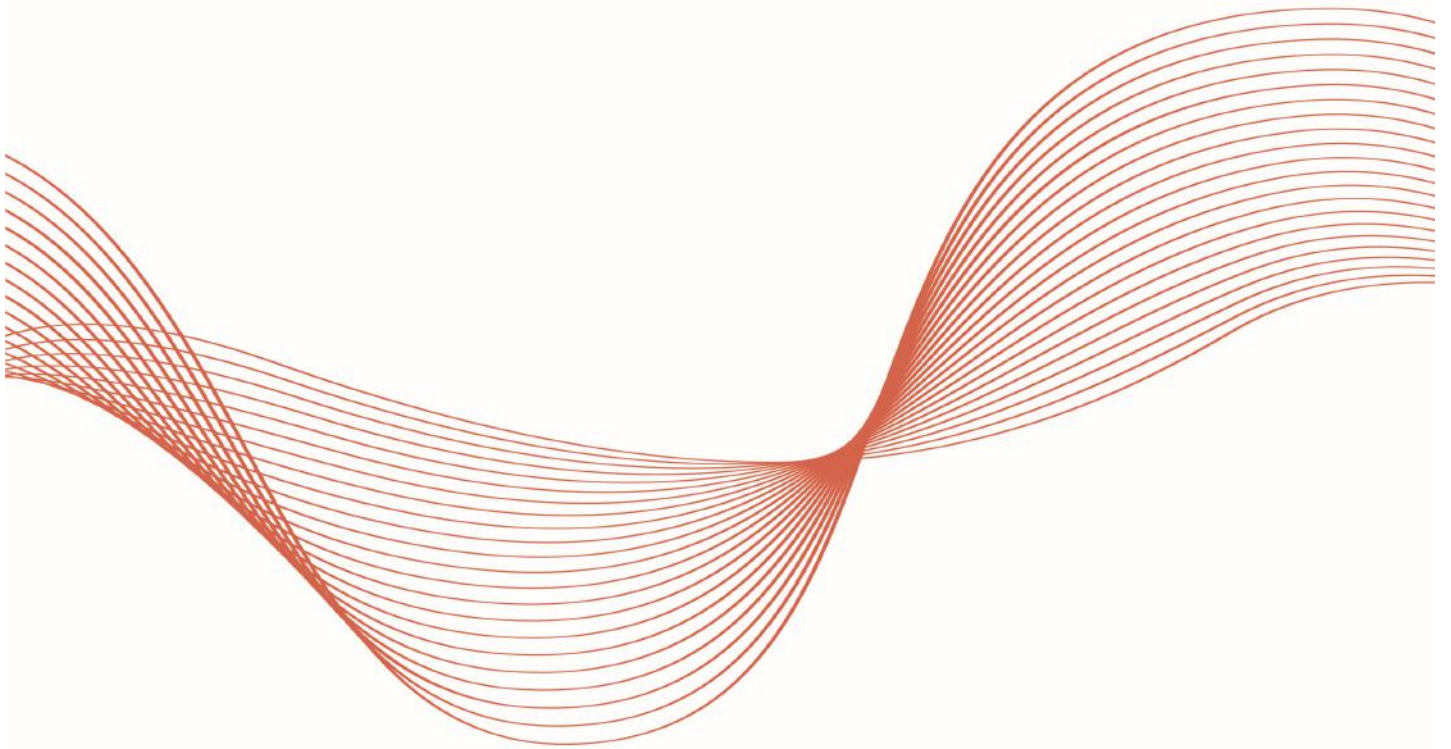


Jekshine®

Jekson Machinery Pvt.Ltd.

An ISO 9001-2008 CERTIFIED COMPANY





**Jekshine**<sup>®</sup>

**Jekson Machinery Pvt.Ltd.**

An ISO 9001 : 2008 CERTIFIED COMPANY

Address : Plot No. 168, Road No. 4, G.I.D.C., Kathwada, Ahmedabad, (Guj.) - 30, INDIA.

Ph. No. : (079) 22901850 / 51, (079) 65259895, +91 9228007151 / 52.

Email : [intro@jeksonmachinery.com](mailto:intro@jeksonmachinery.com), [jeksonmachinery@ymail.com](mailto:jeksonmachinery@ymail.com)

Web. : [www.Jeksonmachinery.com](http://www.Jeksonmachinery.com), [www.Hydraulicmachines.com](http://www.Hydraulicmachines.com)

 |  |  @ [mkt.jeksonmachinery@gmail.com](mailto:mkt.jeksonmachinery@gmail.com)